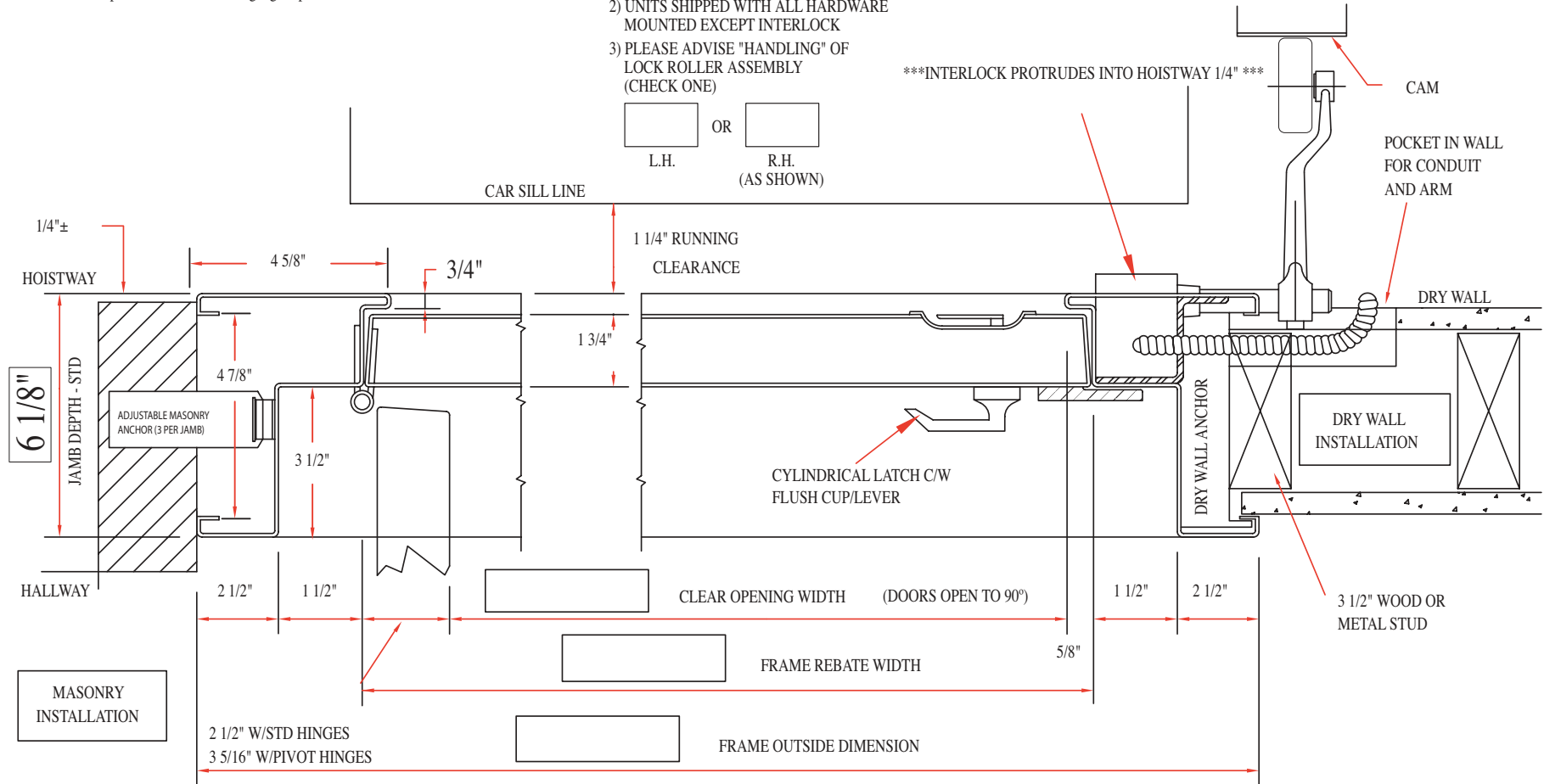
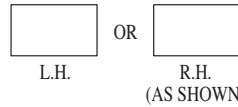


FRAME					DOORS				
QUANTITY	CONST.	WIDTH	HEIGHT	JAMB DEPTH	QUANTITY	CONST.	WIDTH	HEIGHT	THICKNESS
	16 GA.			6 1/8"		16 GA.			1 3/4"

Note: Door and frames shall be constructed of best quality zinc wipe-coated sheet steel of gauges specified.

NOTES:

- 1) ASSEMBLY SHOWN IS RIGHT HAND
- 2) UNITS SHIPPED WITH ALL HARDWARE MOUNTED EXCEPT INTERLOCK
- 3) PLEASE ADVISE "HANDLING" OF LOCK ROLLER ASSEMBLY (CHECK ONE)



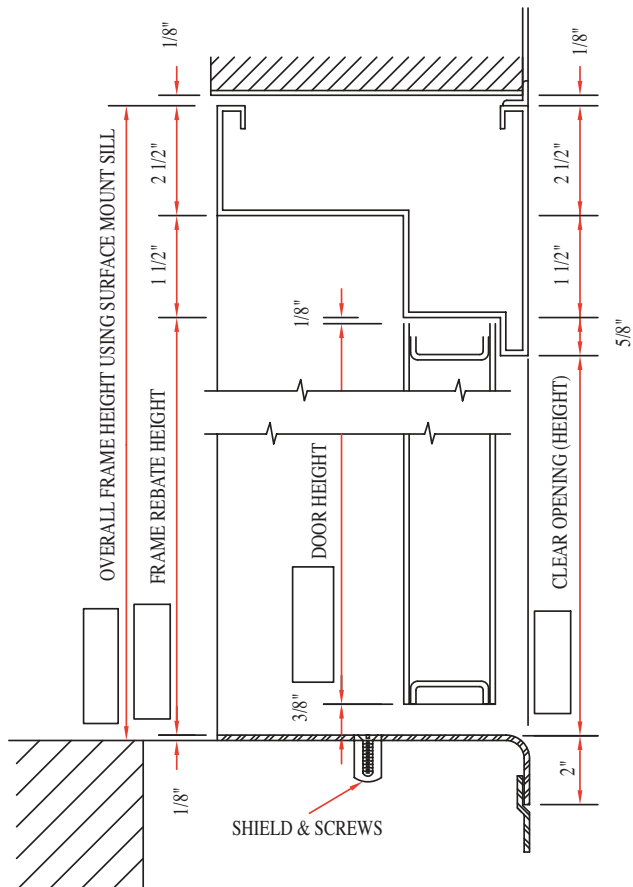
RESIDENTIAL APPLICATION ONLY!!

PLAN VIEW (NOT TO SCALE)

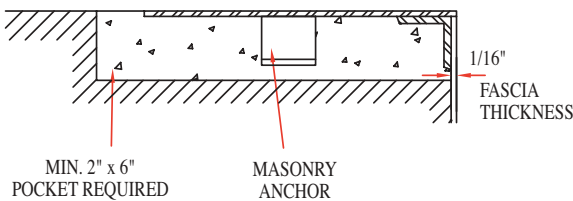


RES PROFILE SWING DOOR UNIT

RES - 750 - A SERIES - PAGE 1 OF 2



STANDARD - SURFACE MOUNT SILL



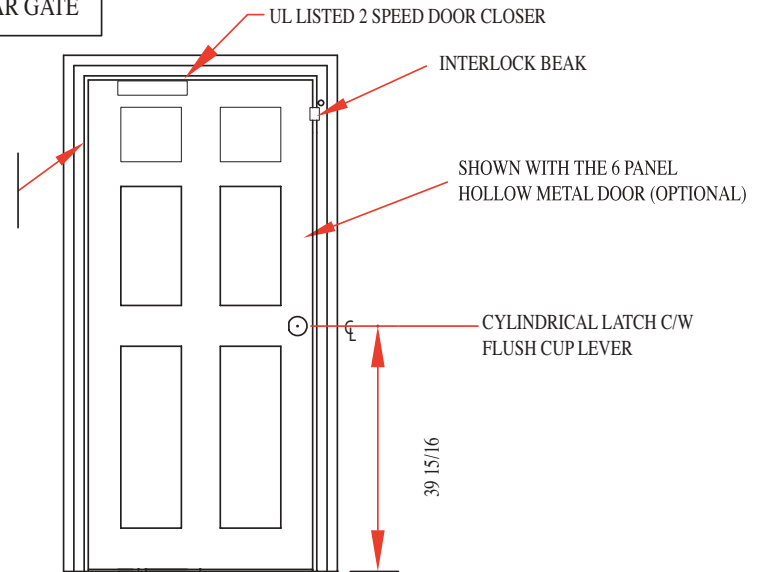
OPTIONAL - FLUSH MOUNT SILL

VERTICAL SECTION

NOTE: MUST USE WITH CAR GATE

1-1/2-PAIRS
4 1/2" x 4"
BALL BEARING HINGES

1 1/2 HOUR "B" FIRE LABEL



FRONT VIEW

IMPORTANT INFORMATION NEEDED FROM INSTALLING CONTRACTOR:

- Q. WHAT IS MAXIMUM ROUGH OPENING AVAILABLE? _____ WIDE x _____ HIGH
(NOTE: PROVIDE AS MUCH ROUGH OPENING AS POSSIBLE FOR GOOD FASTENING AND SATISFACTORY INSTALLATION)
- Q. WHEN ENTRANCE IS SET IN PLACE, DISTANCE FROM HATCH SIDE OF CLOSED DOOR TO CAR SILL (INCHES)? _____
- Q. (A) WILL FRAMES BE ATTACHED TO BUILDING STRUCTURE BY DRYWALL, BRICK/CONC. BLOCK? _____
IF SO - WALL THICKNESS
- (B) WELDED TO STEEL CHANNELS? _____
IF SO - SIZE OF CHANNELS
- (C) OTHER METHOD (SPECIFY) _____
- Q. FINISH: (A) STANDARD SATIN COAT GAL. _____
(B) OTHER (SPECIFY) _____
- Q. WHERE IS (OE WILL BE) LOCATION OF CAM WHICH WILL UNLOCK DOOR INTERLOCKS ? (VIEWED FROM HALL SIDE) LH RH

